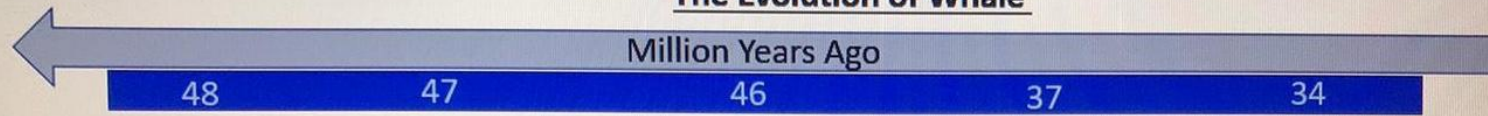


The Evolution of Whale



Pakicetus



Faraged in streams
1.75 meters/6foot long
Nostrils far forward
Forelimbs and hind limbs function for walking
No tail flukes

Maiacetus



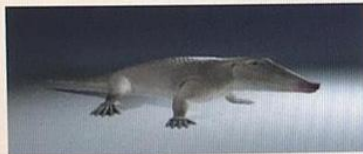
Sea lion-like, spent some time on land
3 meters/10 feet long
Forelimbs function for walking and swimming
Large hind limbs
No tail flukes

Llanocetus



Completely aquatic
9-10 meters/30-33 feet long
Teeth reduced
First evidence of baleen for filter feeding
Nostrils far back on skull
Elbows immobile

Ambulocetus



Alligator-like, fed in the water
4.15 meters/14 feet long
Forelimbs and hind limbs function for walking
No tail flukes

Dorudon



Completely aquatic
4.5 meters/15 feet long
Nostrils farther back on skull
Forelimbs become flippers
Elongation of the trunk
Reduced hind limbs
Evolution of tail flukes

Today's Whale



From land to water
whales evolved rapidly
in response to a changing environment
today's whales all spring
from one common ancestor...
one that walked on land